

## ➤ NetBox IP54 OutDoor Panel 700mm x 700mm x 550mm

Part Number: NB-CAB-191

NetBox - NB-CAB-191 - Rugged OutDoor IP54 Panel is Designed & Customized for the GEBH - EWA PLC Project, to house GE's PLC's, RTU devices, UPS, UPS Power Supply, UPS Battery, the required MCB's, Terminal Blocks, Cabling Connectivity and all the other required accessories..

NetBox IP54 Panel body is provided with rain gutter profile and side bubble type EPDM rubber gasket, for reliable protection against water and dust entry.

To manage the heat discharge, the Panel is provided with 2 Fan's and a Filtered Air intake Cowl at the front, to discharge hot air through the canopy, on the top.

The Panel is provided with a Cable Gland Plate at the rear bottom to accomodate 6 Cables.

The Panel is provided with wall mounting channels on the sides and as well as on the top to safely mount the panel on a concrete wall. Further, for additional support and safety, 2 x 540mm deep L-Support's are provided, which supports the panel weight from the bottom.

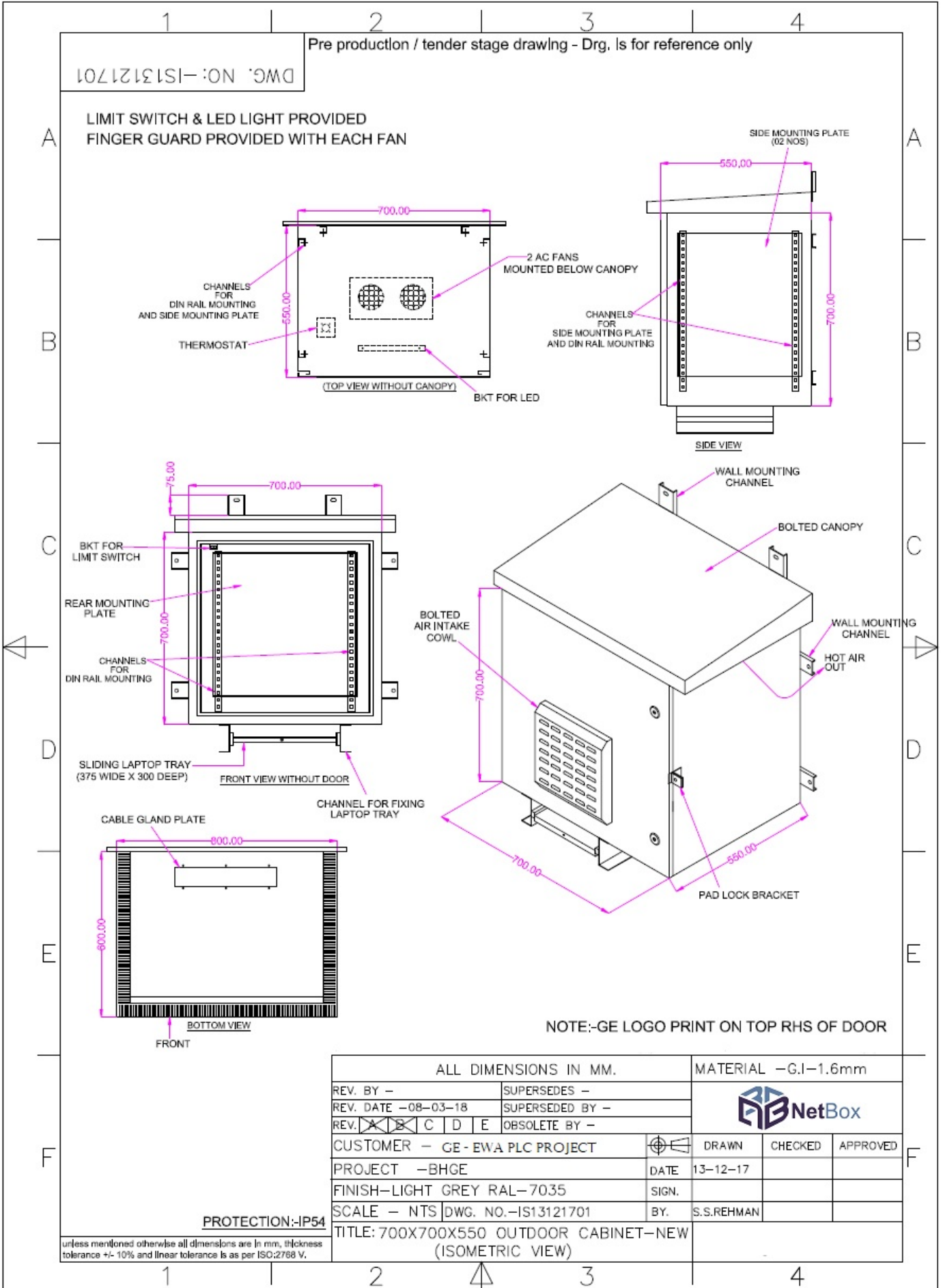
The Panel design incorporates a Laptop Tray at the bottom, which allows the user to comfortably place the laptop and work on the device configurations. LED Light is also provided in the Panel.

### **FEATURES**

- 700mm (H) x 700mm (W) x 550mm (D)
- 1.5mm thickness Stainless Steel
- IP54
- Back & Side Mounting Plates (upto Bottom)
- Channel for Din Rail Mounting
- Cable Gland Plate at bottom (rear) to accommodate 6 Cables
- Laptop Tray at bottom - Width/Depth: 375mm (W) x 300mm (D)
- 4 x Side Wall Mounting Channels, 2 x Top Wall Mounting Channels
- Filtered Air Intake Cowl & Hot Air flow out provision
- 2 x Fans, Thermostat
- Panel Light
- Grey RAL7035
- 2 x 540mm deep L-Support



## DRAWING



## SPECIFICATIONS

S.NO.	DESCRIPTION	QTY	MATERIAL/SPECS	FEATURES
1	PANEL MAIN BODY	1	G.I-1.5mm	Powder Coated RAL 7035, Light Grey
2	FRONT DOOR	1	G.I-1.5mm	Powder Coated RAL 7035, Light Grey
3	CANOPY	1	G.I-1.5mm	Powder Coated RAL 7035, Light Grey
4	MOUNTING BACK PLATE	1	G.I-1.5mm	Powder Coated RAL 7035, Light Grey
5	MOUNTING SIDE PLATE	2	G.I-1.5mm	Powder Coated RAL 7035, Light Grey
6	CHANNEL FOR DIN RAIL MTG.	6	G.I-2.0mm	Powder Coated RAL 7035, Light Grey
7	WALL MOUNTING CHANNEL	4	G.I-2.5mm	Powder Coated RAL 7035, Light Grey
8	CABLE GLAND PLATE	1	G.I-1.5mm	The bottom rear Cable Gland Plate is designed for minimum 6 Cables
9	FANS WITH FINGER GUARD	2	AC 220V	Air flow 85 CFM
10	LED LIGHT + LIMIT SWITCH	1		The Led Light switches on when the door is opened
11	THERMOSTAT	1	ANALOG TYPE	Cooling type.
12	BRACKET FOR LIMIT SWITCH	1	G.I-2.5mm	Powder Coated RAL 7035, Light Grey
13	PADLOCK BRACKET	1	G.I-2.0mm	Powder Coated RAL 7035, Light Grey
14	DUST FILTER	1	12mm	12mm Filter with Aluminum frame
15	LAPTOP TRAY	1	375mm x 300mm	Sliding Laptop Tray at the Bottom
16	PROTECTION LEVEL		IP54	The panel's body is provided with rain gutter profile and side bubble type EPDM rubber gasket for reliable protection against water and dust entry.
17	PANEL WEIGHT			Approx 70Kgs
18	L - SUPPORT	2	540mm (D) RAL 7035	2 x 540mm Deep L Support is provided with the Panel with 4 x 10mm Concrete Wall Drill Nuts
19	GE LOGO PRINT			GE Logo Printed on the Top Right of the Front Door
20	NETBOX PART NUMBER			NB-CAB-191