

## ➤ Heavy-Duty Fixed Shelves

- Rated load: 100 kg
- SPCC cold rolled steel, T: 1.2mm
- Black (RAL9004)



P/N	Color	Dimension WxD (mm)
NB-CAB-129	Black	472 x 350 (for 600-depth cabinet)
NB-CAB-085	Black	472 x 550 (for 800-depth cabinet)
NB-CAB-099	Black	472 x 710 (for 1000-depth cabinet)

## ➤ Heavy-Duty 19" Rackmount Fixed Shelves with mounting ear

- Rated load: 100 kg
- SPCC cold rolled steel, T: 1.2mm
- Black (RAL9004)



P/N	Color	Dimension WxD (mm)
NB-CAB-100	Black	440 x 550 (for 800-depth cabinet)
NB-CAB-101	Black	440 x 710 (for 1000-depth cabinet)

## ➤ Cantilever Shelves

- Rated load: 25 kg
- 19" installation
- 2U high
- SPCC cold rolled steel
- Thickness: 1.5mm



P/N	Color	Dimension WxD (mm)
NB-CAB-057	Black (RAL9004)	440 x 350
NB-CAB-058	Gray (RAL7035)	440 x 350

## ➤ Keyboard Tray

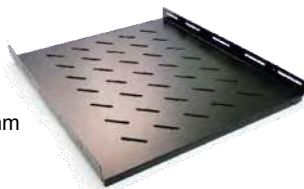
- 19" Rack Mount
- High grade cold rolled steel
- Adjustable cable arm
- Sloped front edge
- Black (RAL9004)



P/N	Description
NB-CAB-081	Telescopic keyboard tray kit

## ➤ Fixed Shelves

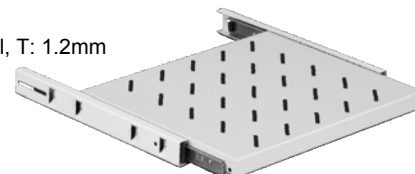
- Rated load: 60 kg
- SPCC cold rolled steel, T: 1.2mm
- Black (RAL9004)



P/N	Color	Dimension WxD (mm)
NB-CAB-130	Black	472 x 350 (for 600-depth cabinet)
NB-CAB-131	Black	472 x 550 (for 800-depth cabinet)
NB-CAB-132	Black	472 x 730 (for 1000-depth cabinet)

## ➤ Sliding Shelves

- Rated load: 20 kg
- SPCC cold rolled steel, T: 1.2mm
- Black (RAL9004)



P/N	Color	Dimension WxD1xD2 (mm)
NB-CAB-115	Black	472 x 550 x 580 (for 800-depth cabinet)
NB-CAB-116	Black	472 x 710 x 740 (for 1000-depth cabinet)

## ➤ Heavy-Duty Vented Fixed Server Shelves

- Rated load: 100 kg
- High grade cold rolled steel



P/N	Color	Depth (mm)
NB-CAB-045	Black	450
NB-CAB-046	White	450
NB-CAB-047	Black	550
NB-CAB-048	White	550
NB-CAB-049	Black	700
NB-CAB-079	White	700

## ➤ Full Width Fixed & Sliding Shelves

- Rated load: 50 - 75 kg
- High grade cold rolled steel
- Black (RAL9004)



P/N	Description
NB-CAB-053	Full width fixed server shelf 700mm Deep
NB-CAB-054	Full width sliding server shelf 700mm Deep

## ➤ Blanking Panels

- 19" Rack Mount 1U, 2U & 4U
- SPCC cold rolled steel, 1.2mm
- Powder coated
- Black (RAL9004)



P/N	Description
NB-CAB-091	1U Blanking panel
NB-CAB-092	2U Blanking panel
NB-CAB-093	4U Blanking panel

## ➤ Cooling Fan

- Dimension: 120mm\*120mm\*38mm
- Mounting dimension: 105mm\*105mm
- Air flowing: 50-110 CBM/H
- Black (RAL9004)



P/N	Description
NB-ACC-012	Single fan 220VAC

## ➤ 1U Cable Manager, Metal D-Ring

- 19" Rack Mount
- 5 rings
- Carbon steel (1.5mm panel, 2.0mm Metal Buckle)
- Powder coated
- Black (RAL9004)



P/N	Description
NB-ACC-008	1U cable manager, with metal D-rings

## ➤ Cage Nut Set

- Screw: M6\*16
- Nut: M6
- Washer: Φ6
- Plated nickle surface finish



P/N	Description
NB-ACC-013	Cage nuts & screws, (50-pack)

## ➤ 1U Cable Manager, Metal With Cover

- 19" Rack Mount
- Carbon steel 1.0mm
- Powder coated
- Black (RAL9004)



P/N	Description
NB-ACC-040	1U metal cable manager with cover

## ➤ 2U Cable Manager, Metal D-Ring

- 19" Rack Mount
- 5 rings
- Carbon steel (1.5mm panel, 2.0mm Metal Buckle)
- Powder coated
- Black (RAL9004)



P/N	Description
NB-ACC-010	2U cable manager, with metal D-rings

## ➤ 1U Cable Manager, Plastic With Cover

- 19" Rack Mount
- High-strength, flame-retardant thermoplastic
- Carbon steel Base 1.0mm
- Powder coated
- Black (RAL9004)



P/N	Description
NB-ACC-009	1U plastic cable manager, with cover

## ➤ 2U Cable Manager, Plastic With Cover

- 19" Rack Mount
- High-strength, flame-retardant thermoplastic
- Carbon steel Base 1.0mm
- Powder coated
- Black (RAL9004)



P/N	Description
NB-ACC-011	2U plastic cable manager, with cover