

FIBER OPTIC PRODUCTS



FIBER OPTIC CABLES 42 - 57

FIBER OPTIC PATCH CORDS & PIGTAILS 58 - 65

MULTI-FIBER PRE-TERMINATED FIBER OPTIC CABLES 66

FIBER OPTIC PATCH PANELS & Cabinets 67 - 71

FIBER OPTIC ODF & ORGANIZER 72

FIBER OPTIC ADAPTERS/CONNECTORS/ATTENUATORS 73 - 74

FIBER OPTIC SPLICING ACCESSORIES 75

OUTDOOR FIBER OPTIC SPLICE CLOSURES (FOSC) 76 - 80

➤ NB-FOCL-001

Application:

- Suitable for aerial and wall-mounting

Features:

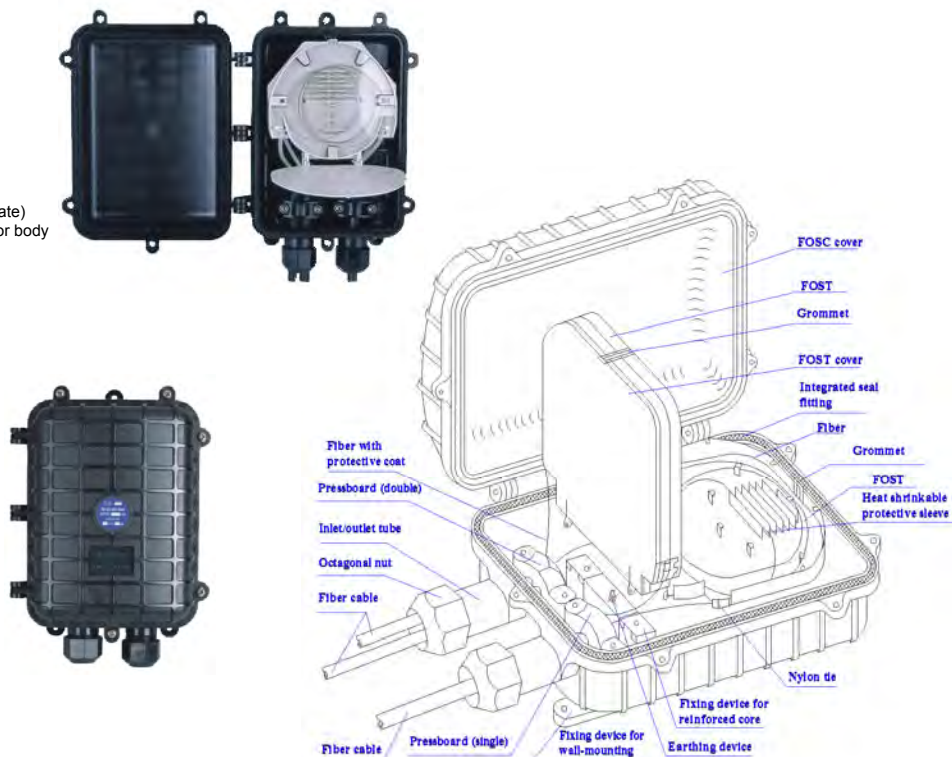
- Made of high-strength engineering plastic (polycarbonate)
- Winding tape sealing for cable & Mechanical sealing for body
- Innovative structure design and easy for operation
- Ambient temperature ranges from -40 to +60°C

Dimension and capacity:

- Outside dimension (LxWxH): 280x200x90 (mm)
- Weight (excluding outside box): 1200g – 1500g
- Number of inlet/outlet ports: 2
- Diameter of fiber cable: $\Phi 8 - \Phi 14$ (mm)
- Core capacity of FOSC: 48 (max)
- Number of splice tray: 4
- Core capacity per tray: 12 core

Main accessories and special tools:

- Heat shrinkable protective sleeve
- Nylon tie
- Seal tape
- Hanging hook
- Earthing wire
- Labeling paper
- Buffer tube



Ordering Information:

P/N	Size (mm) L x W x H	Core capacity	Cable Port (max)	Max diameter of cable (mm)	Number of Splice tray	Core Capacity per tray
NB-FOCL-001	280x200x90	48	2	$\Phi 14$	4	12

➤ NB-FOCL-002

Application:

- Suitable for aerial, wall-mounting, pipeline & underground

Features:

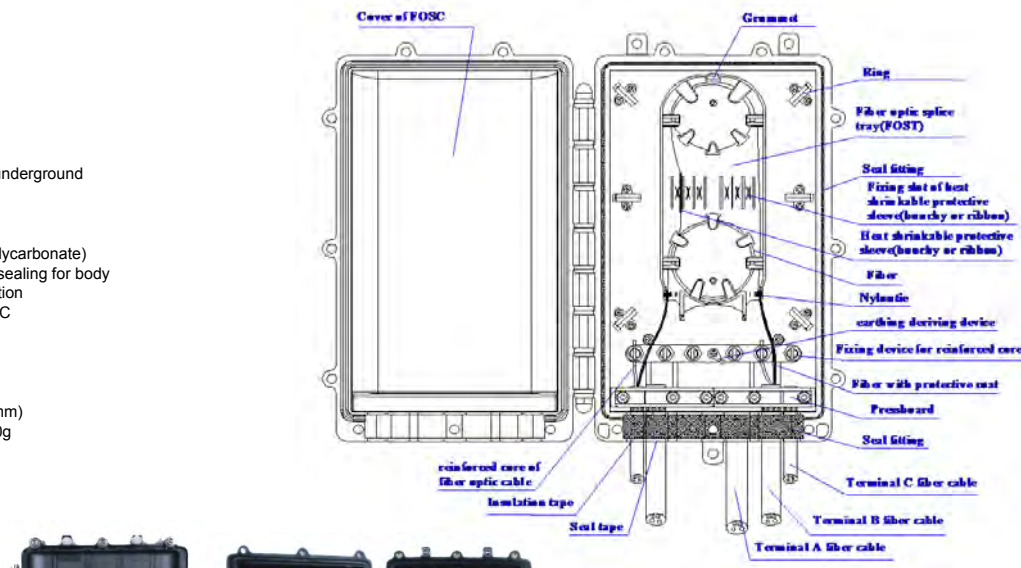
- Made of high-strength engineering plastic (polycarbonate)
- Winding tape sealing for cable & Mechanical sealing for body
- Innovative structure design and easy for operation
- Ambient temperature ranges from -40 to +65°C

Dimension and capacity:

- Outside dimension (LxWxH): 385x248x120 (mm)
- Weight (excluding outside box): 3200g – 3600g
- Number of inlet/outlet ports: 6
- Diameter of fiber cable: $\Phi 8 - \Phi 23$ (mm)
- Core capacity of FOSC: 96 (max)
- Number of splice tray: 8
- Core capacity per tray: 12 core

Main accessories and special tools:

- Heat shrinkable protective sleeve
- Nylon tie
- Seal tape
- Hanging hook
- Earthing wire
- Labeling paper
- Buffer tube



Ordering Information:

P/N	Size (mm) L x W x H	Core capacity	Cable Port (max)	Max diameter of cable (mm)	Number of Splice tray	Core Capacity per tray
NB-FOCL-002	385x248x120	96	6	$\Phi 23$	8	12

➤ NB-FOCL-003 & NB-FOCL-004

Application:

- Suitable for aerial, underground, wall-mounting, duct-mounting and handhole-mounting

Features:

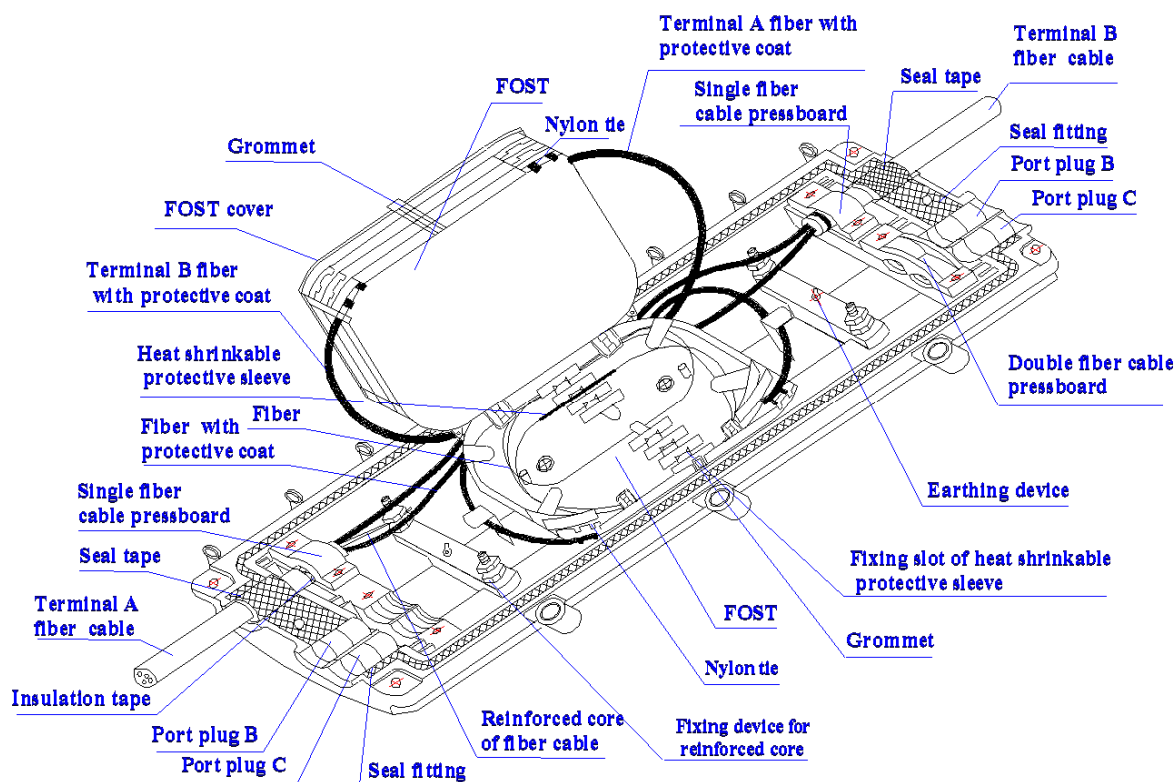
- Made of high-strength engineering plastic (polycarbonate)
- Winding tape sealing for cable & Mechanical sealing for body
- Innovative structure design and easy for operation
- Ambient temperature ranges from -40 to +65°C

Dimension and capacity:

- Outside dimension (LxWxH): 396x190x126 (mm)
- Weight (excluding outside box): 2500g – 2825g
- Number of inlet/outlet ports: 6
- Diameter of fiber cable: $\Phi 8 - \Phi 20$ (mm)
- Core capacity of FOSC: 96 (max)
- Number of splice tray: 4
- Core capacity per tray: 12 & 24 core

Main accessories and special tools:

- Heat shrinkable protective sleeve
- Nylon tie
- Seal tape
- Hanging hook
- Earthing wire
- Labeling paper
- Buffer tube



Ordering Information:

P/N	Size (mm) L x W x H	Core capacity	Cable Port (max)	Max diameter of cable (mm)	Number of Splice tray	Core Capacity per tray
NB-FOCL-003	396x190x126	48	6	$\Phi 20$	4	12
NB-FOCL-004	396x190x126	96	6	$\Phi 20$	4	24

➤ NB-FOCL-005

Application:

- Directly buried and special environment underground

Features:

- Material suitable for underground
- Innovative structure design and easy for operation
- Anti-chemical cauterization
- Anti-hydrolysis Specialty
- Anti-termite Specialty
- Ambient temperature ranges from -40 to +65°C

Dimension and capacity:

- Outside dimension (LxWxH): 468x210x116 (mm)
- Weight (excluding outside box): 2650g – 3000g
- Number of inlet/outlet ports: 4
- Diameter of fiber cable: $\Phi 7 - \Phi 21$ (mm)
- Core capacity of FOSC: 96 (max)
- Number of splice tray: 4
- Core capacity per tray: 24 core

Main accessories and special tools:

- Heat shrinkable protective sleeve
- Nylon tie
- Seal tape
- Hanging hook
- Earthing wire
- Labeling paper
- Buffer tube



Ordering Information:

P/N	Size (mm) L x W x H	Core capacity	Cable Port (max)	Max diameter of cable (mm)	Number of Splice tray	Core Capacity per tray
NB-FOCL-005	468x210x116	96	4	$\Phi 21$	4	24

➤ NB-FOCL-006

Application:

- Suitable for aerial, wall-mounting, duct-mounting and underground

Features:

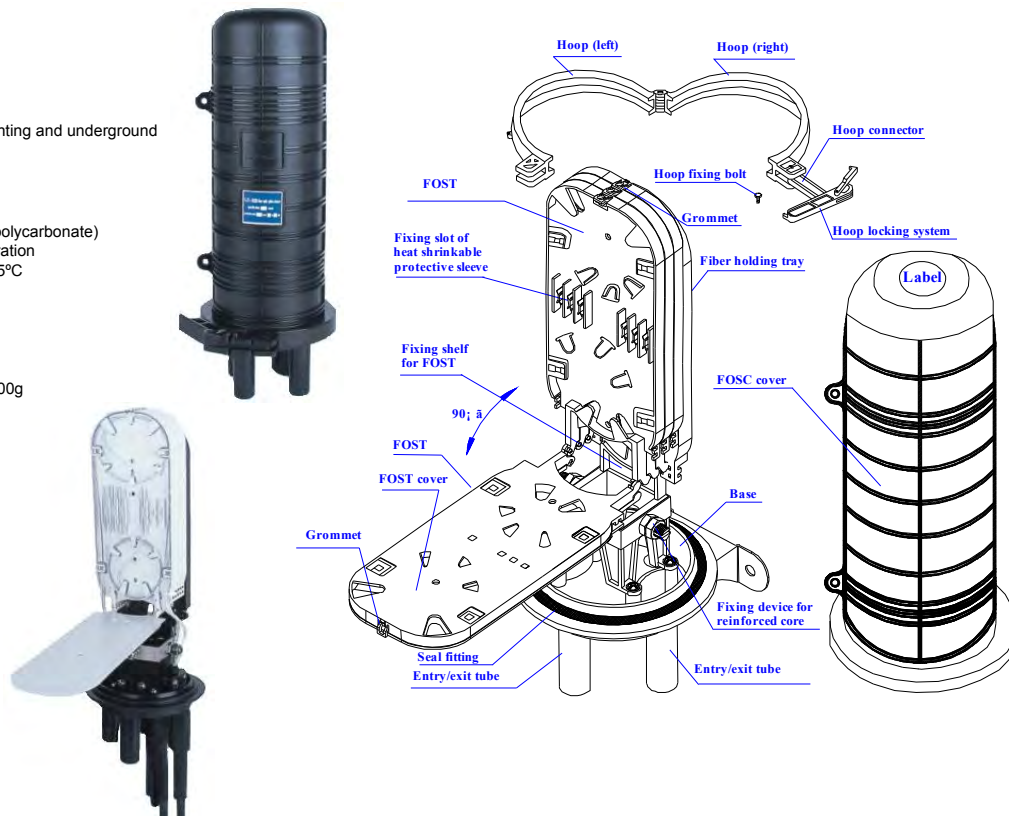
- Dome heat shrinkable seal
- Made of high-strength engineering plastic (polycarbonate)
- Innovative structure design and easy for operation
- Ambient temperature ranges from -40 to +65°C

Dimension and capacity:

- Outside dimension (HxD): 435x $\Phi 190$ (mm)
- Weight (excluding outside box): 2350g – 2600g
- Number of inlet/outlet ports: 5
- Diameter of fiber cable: $\Phi 8 - \Phi 25$ (mm)
- Core capacity of FOSC: 96 (max)
- Number of splice tray: 4
- Core capacity per tray: 24 core

Main accessories and special tools:

- Heat shrinkable protective sleeve
- Nylon tie
- Seal tape
- Hanging hook
- Earthing wire
- Labeling paper
- Buffer tube (7 meters)
- Pressure testing valve
- Heat shrinkable fixing sleeves



Ordering Information:

P/N	Size (mm) H x D	Core capacity	Cable Port (max)	Max diameter of cable (mm)	Number of Splice tray	Core Capacity per tray
NB-FOCL-006	435x $\Phi 190$	96	4	$\Phi 25$	4	24

➤ NB-FOCL-007

Application:

- Suitable for aerial, wall-mounting, duct-mounting and underground

Features:

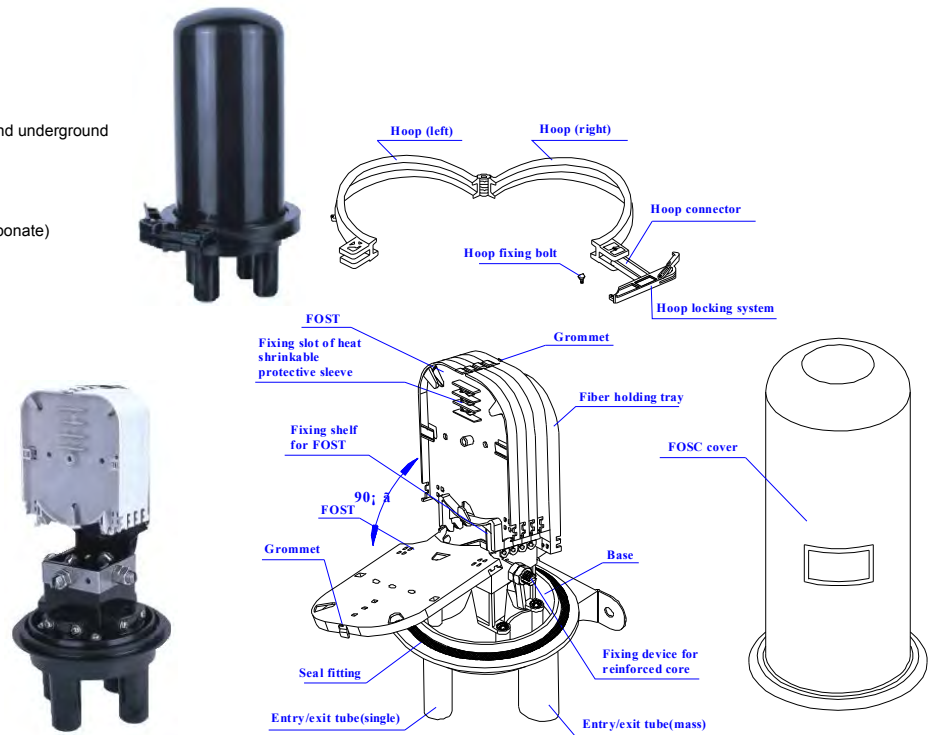
- Dome heat shrinkable seal
- Made of high-strength engineering plastic (polycarbonate)
- Innovative structure design and easy for operation
- Ambient temperature ranges from -40 to +65°C

Dimension and capacity:

- Outside dimension (HxD): 288xΦ178 (mm)
- Weight (excluding outside box): 1550g – 1740g
- Number of inlet/outlet ports: 4
- Diameter of fiber cable: Φ8 – Φ20 (mm)
- Core capacity of FOSC: 48 (max)
- Number of splice tray: 4
- Core capacity per tray: 12 core

Main accessories and special tools:

- Heat shrinkable protective sleeve
- Nylon tie
- Seal tape
- Hanging hook
- Earthing wire
- Labeling paper
- Buffer tube (2 meters)
- Pressure testing valve
- Heat shrinkable fixing sleeves



Ordering Information:

P/N	Size (mm) H x D	Core capacity	Cable Port (max)	Max diameter of cable (mm)	Number of Splice tray	Core Capacity per tray
NB-FOCL-007	288xΦ178	48	4	Φ20	4	12

➤ NB-FOCL-008

Application:

- Suitable for aerial, wall-mounting, duct-mounting and underground

Features:

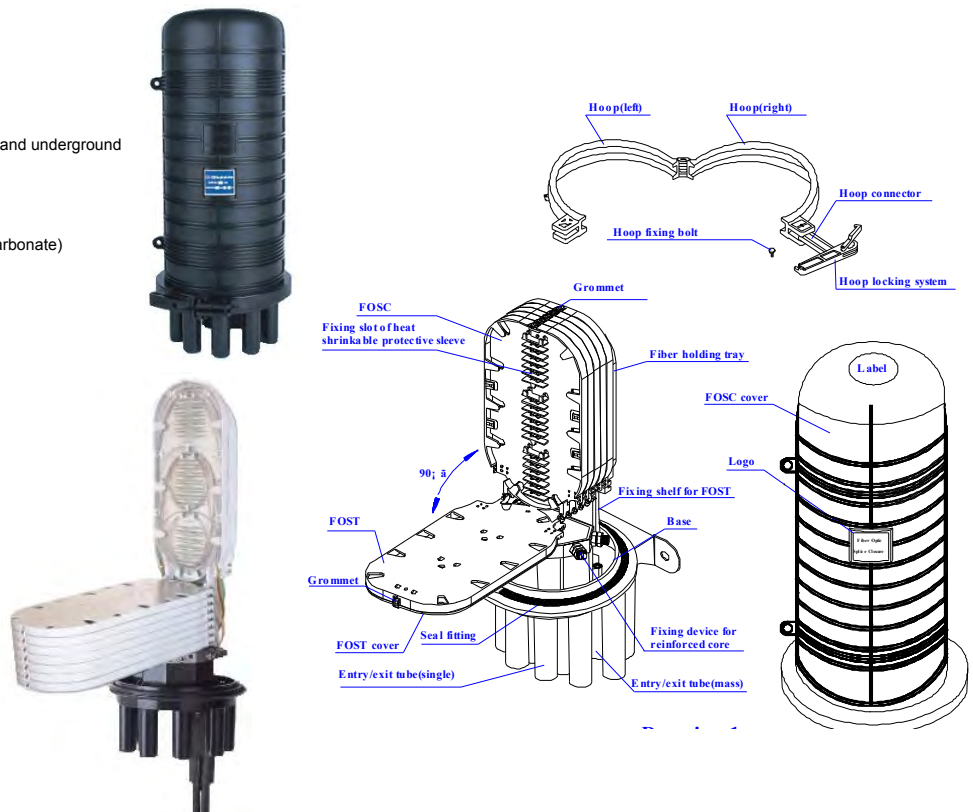
- Dome heat shrinkable seal
- Made of high-strength engineering plastic (polycarbonate)
- Innovative structure design and easy for operation
- Ambient temperature ranges from -40 to +65°C

Dimension and capacity:

- Outside dimension (HxD): 510xΦ250 (mm)
- Weight (excluding outside box): 3860g – 5270g
- Number of inlet/outlet ports: 8 - 19
- Diameter of fiber cable: Φ8 – Φ43 (mm)
- Core capacity of FOSC: 288 (max)
- Number of splice tray: 12
- Core capacity per tray: 24 core

Main accessories and special tools:

- Heat shrinkable protective sleeve
- Nylon tie
- Seal tape
- Hanging hook
- Earthing wire
- Labeling paper
- Buffer tube (12 meters)
- Pressure testing valve
- Heat shrinkable fixing sleeves



Ordering Information:

P/N	Size (mm) H x D	Core capacity	Cable Port (max)	Max diameter of cable (mm)	Number of Splice tray	Core Capacity per tray
NB-FOCL-008	510xΦ250	288	8 - 19	Φ43	12	24

➤ NB-FOCL-009

Application:

- Suitable for wall-mounting, duct-mounting and underground

Features:

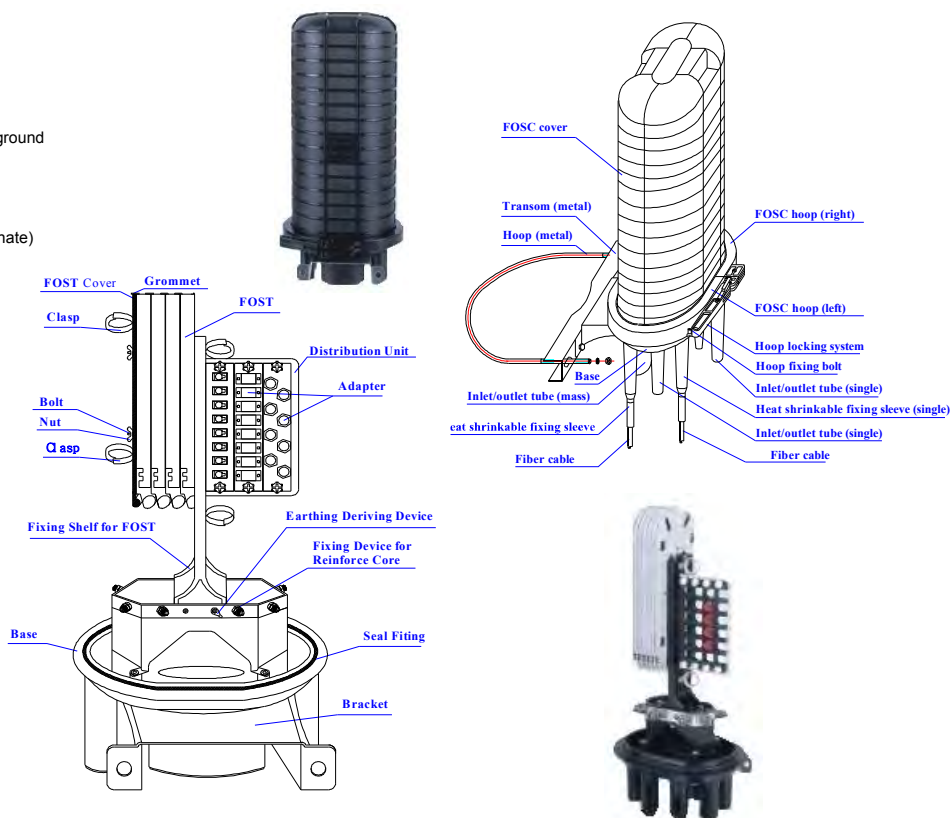
- Dome heat shrinkable seal
- Made of high-strength engineering plastic (polycarbonate)
- Innovative structure design and easy for operation
- Ambient temperature ranges from -40 to +65°C

Dimension and capacity:

- Outside dimension (HxD): 490xΦ220 (mm)
- Weight (excluding outside box): 2950g – 4250g
- Number of inlet/outlet ports: 8 - 10
- Diameter of fiber cable: Φ8 – Φ36 (mm)
- Core capacity of FOSC: 96 (max)
- Number of splice tray: 4
- Core capacity per tray: 24 core
- 24 port distribution panel

Main accessories and special tools:

- Heat shrinkable protective sleeve
- Nylon tie
- Seal tape
- Hanging hook
- Earthing wire
- Labeling paper
- Buffer tube (4 meters)
- Pressure testing valve
- Heat shrinkable fixing sleeves



Ordering Information:

P/N	Size (mm) H x D	Core capacity	Cable Port (max)	Max diameter of cable (mm)	Number of Splice tray	Core Capacity per tray
NB-FOCL-009	490xΦ220	96	8 - 10	Φ36	4	24

➤ NB-FOCL-010

Application:

- Suitable for aerial, wall-mounting, duct-mounting and underground

Features:

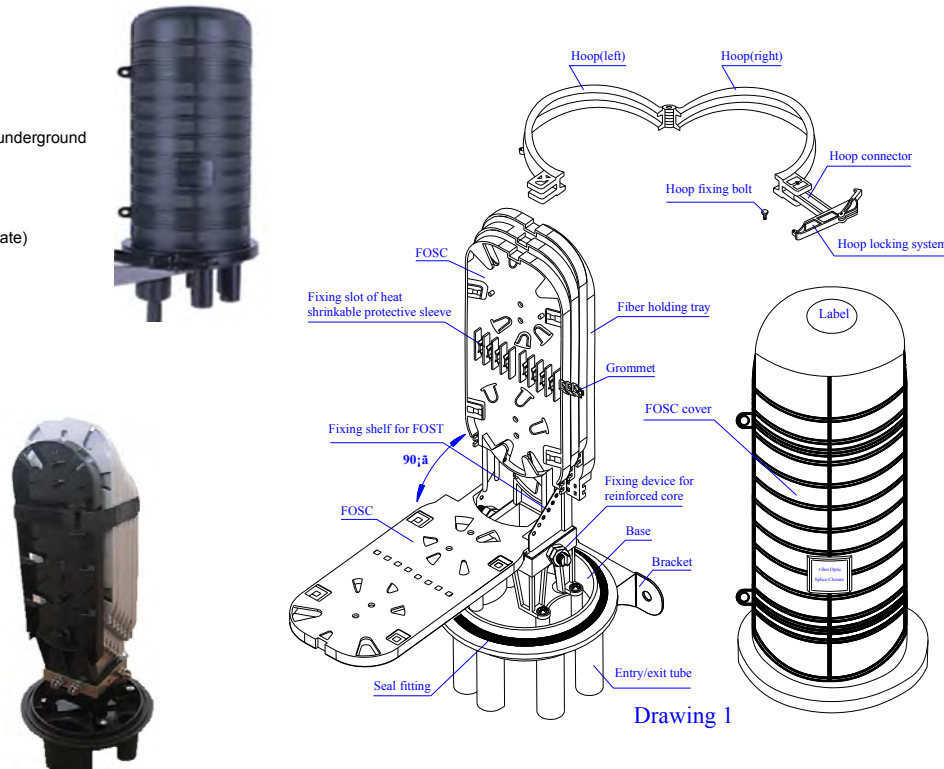
- Dome heat shrinkable seal
- Made of high-strength engineering plastic (polycarbonate)
- Innovative structure design and easy for operation
- Ambient temperature ranges from -40 to +65°C

Dimension and capacity:

- Outside dimension (HxD): 500xΦ228 (mm)
- Weight (excluding outside box): 3100g – 3930g
- Number of inlet/outlet ports: 5 - 14
- Diameter of fiber cable: Φ8 – Φ42 (mm)
- Core capacity of FOSC: 144 (max)
- Number of splice tray: 5
- Core capacity per tray: 32 core

Main accessories and special tools:

- Heat shrinkable protective sleeve
- Nylon tie
- Seal tape
- Hanging hook
- Earthing wire
- Labeling paper
- Buffer tube (7 meters)
- Pressure testing valve
- Heat shrinkable fixing sleeves



Ordering Information:

P/N	Size (mm) H x D	Core capacity	Cable Port (max)	Max diameter of cable (mm)	Number of Splice tray	Core Capacity per tray
NB-FOCL-010	500xΦ228	144	5 - 14	Φ8 – Φ42	5	32